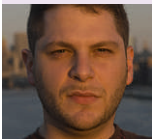


WATCH FOR MSO performs “Beethoven 9” (11/30-12/2) • Acacia Theater Company performs “A Girl, A Mirror and a Magician” (12/1-2) •

Pitch your show

Ben Lerman



Ben Lerman, who calls himself the “gay ukulele player set to win over the Midwest and South,” performs 9 p.m. Saturday, Nov. 24, at Art Bar, 722 E. Burleigh St. He launches his debut CD, “Uklear Winter,” on this tour.

Q: Are you using the ukulele to create a path of destruction?
A: My ukulele Lenny and I are on a path to destroy the winter blahs. The Ukulele Youth Movement has begun. Our numbers are growing.

Q: Why should we go to your show?

A: I’m not going to tell you how to live your life, but if you want to answer that nagging question, “What would happen if ‘Weird Al’ Yankovic and Big Gay Al from ‘South Park’ had a baby with Al Jarreau?” you should come to my show and find out.

Q: Who would win a death match between you and a lesbian accordion player from Milwaukee?

A: Bare-handed, (she) would take me down. But if it’s “street rules,” I’d distract her with a new pair of Birkenstocks.

LILLEDESHAN BOSE

Holiday arts guide

Holy crap! It's the holiday season already. If you're having trouble getting into the holiday mind set, don't sweat it. The Milwaukee arts scene provides plenty of opportunities to whip up that holiday spirit.

THEATER

David Seebach's “Merry Magic of Christmas” Nov. 23-25. Marcus Majestic Cinema, 770 N. Springdale Road, Brookfield.

“Twelve Days — A Milwaukee Christmas” Nov. 23-Dec. 24. Todd Wehr Theater at the Marcus Center, 929 N. Water St. (414) 273-7206. www.firststage.org.

“Carolin’ Carolynne’s Comin’ To Town” Through Jan. 6. Milwaukee Repertory Theater performs at Stackner Cabaret, 108 E. Wells St. (414) 224-9490. www.milwaukeekeerep.com.

“A Christmas Carol” Nov. 23-Dec. 20. Milwaukee Repertory Theater performs at Pabst Theater, 144 E. Wells St. (414) 224-9490. www.milwaukeekeerep.com.

“A Cudahy Caroler Christmas” Nov. 23-Jan. 5. In Tandem Theatre performs at the Marcus Center, 929 N. Water St. (414) 444-2316. www.intandemtheatre.com.

John McGivern’s “Holiday Monologue” Nov. 23. Sunset Playhouse, 800 Elm Grove Road, Elm Grove. (262) 782-4430 www.sunsetplayhouse.com

John McGivern’s “Winter Tales” Nov. 30-Dec. 2. South Milwaukee Performing Arts Center, 901 15th Ave., South Milwaukee. (414) 766-5049 www.southmilwaukeepeac.org.

“The Best Christmas Pageant Ever” Nov. 30-Dec. 2. Falls Patio Players perform at Menomonee Falls North Junior High School, N88-W16750 Garfield Drive, Menomonee Falls. (262) 255-8372 www.falls-patioplayers.com.

“The Christmas Schooner” Dec. 7-16. Memories Dinner Theater, 1077 Lake Drive, Port Washington. (262) 284-6850 www.memoriesballroom.com.

“ ’Twas the Night Before Christmas” Dec. 9. Schwan Concert Hall at Wisconsin Lutheran College, 8815 W. Wisconsin Ave. (414) 443-8802 www.wlc.edu/arts.

“Greetings!” Through Dec. 16. Next Act Theatre performs at Off-Broadway Theatre, 342 N. Water St. (414) 278-0765 www.nextact.org.

MUSIC

Trans-Siberian Orchestra Dec. 16 at the Bradley Center, 1001 N. 4th St. (414) 276-4545, www.ticketmaster.com

‘Tis the Season” Holiday Pajama Jamboree Nov. 28 at midnight. Festival City Symphony performs at Marcus Center Bradley Pavilion, 929 N. Water St. (414) 963-9067 www.festiv-alitysymphony.org.

“White Christmas” Nov. 23-Dec. 30. The Skylight performs the musical at the Cabot Lounge of the Broadway Theatre Center, 158 N. Broadway. (414) 291-7800 www.tickets.skylightopera.com.

“Holiday Pops” Milwaukee Symphony Orchestra performs Dec. 7-9 at Uihlein Hall at the Marcus Center, 929 N. Water St., and Dec. 15 at Kuttemperoor Auditorium at the Sharon Lynne Wilson Center for the Arts, 19805 W. Capitol Drive, Brookfield. (414) 291-7605 www.milwaukeekeesymphony.org.

Lori Line: Glory of Christmas” Milwaukee Theatre, 500 W. Kilbourn Ave. (414) 908-6001, www.milwaukeekeetheatre.com.

“The Seven Joys of Christmas” Master Singers of Milwaukee perform Dec. 8 at St. John’s Northwestern Military Academy, 1101 N. Genesee St., Delafield, and Dec. 9 at St. Sebastian Catholic Church, 5400 W. Washington Blvd. www.mastersingersofmilwaukee.org.

“Feliz Navidad” Bel Canto Chorus performs Dec. 8 at Hamilton Fine Arts Center, W220-N6151 Town Line Road, Sussex. (414) 481-8801 www.hamiltonfineartscenter.com.

“Madrigal Christmas Feast” Dec. 1-2. Mount Mary College, 2900 N. Menomonee River Parkway. www.mtmary.edu.

“Christmas at Concordia” Nov. 30-Dec. 1. Chapel of Christ Triumphant at Concordia University Wisconsin, 12800 N. Lake Shore Drive, Mequon. (262) 243-4243.

Christmas with the Mantovani Orchestra and Chorus Dec.14-15. Schwan Concert Hall at Wisconsin Lutheran College, 8815 W. Wisconsin Ave. (414) 443-8802, www.wlc.edu/arts.

“A Polish Christmas with the Lira Ensemble” Dec. 2. Milwaukee Theatre, 500 W. Kilbourn Ave. (414) 908-6001 www.milwaukeekeetheatre.com

DANCE

“The Nutcracker” Dec. 14-29. Milwaukee Ballet performs at Marcus Center, 929 N. Water St. (414) 902-2103 www.milwaukeeballet.org.

Ko-Thi Dance Company holiday recital Dec. 15. Milwaukee High School of the Arts, 2300 W. Highland Blvd. (414) 273-0676 www.ko-thi.org.

MISCELLANEOUS

Festival of Trees Gala Dec. 6. Habitat for Humanity Benefit at Marcus Center, 929 N. Water St. (414) 610-3021 www.festivaloftreesmilwaukee.org.

“Santa vs. Snowman” Nov. 23-Jan 3 at the Humphrey IMAX Dome Theater, 800 W. Wells St. (414) 319-4629 www.mpm.edu.

“Mystery of the Christmas Star” Nov. 23-Jan 3 at the Daniel M. Soref Planetarium, 800 W. Wells St. (414) 319-4629 www.mpm.edu

COMPILED BY ADAM LOVINUS

Theater

“Carolin’ Carolynne’s Comin’ to Town”: Milwaukee Repertory Theater. 8 p.m. Nov. 23; 4 and 8 p.m. Nov. 24; 2 and 7 p.m. Nov. 25; 7:30 p.m. Nov. 28-29. Baker Theater Complex, Stackner Cabaret, 108 E. Wells St. (414) 224-9490. (Through Jan. 6)

“A Christmas Carol”: Milwaukee Repertory Theater. 7:30 p.m. Nov. 23; 2 and 7:30 p.m. Nov. 24; noon and 4:30 p.m. Nov. 25. Pabst Theater, 144 E. Wells St. (414) 224-9490. (Through Dec. 23)

“A Cudahy Caroler Christmas”: In Tandem Theatre. 8 p.m. Nov. 23; 4 and 8 p.m. Nov. 24; 2 p.m. Nov. 25; 7:30 p.m. Nov. 28-29. Marcus Center, Vogel Hall, 929 N. Water St. (414) 273-7206. (Through Jan. 5)

“Greetings!”: Next Act Theatre. 8 p.m. Nov. 23; 4:30 and 8 p.m. Nov. 24; 7 p.m. Nov. 25; 7:30 p.m. Nov. 28-29. Off-Broadway Theatre, 342 N. Water St. (414) 278-0765. (Through Dec. 16)

“Heaven I Need a Hug”: Ever wonder what happened to Ruben Studdard? Or Robin Givens? The “American Idol” season 2 winner and Mike Tyson’s ex-wife share the stage in this show about a boxer whose tragic circumstances make life difficult as he tries to save his marriage, family and future. 8 p.m. Nov. 24-25. Riverside Theater, 116 W. Wisconsin Ave. (414) 286-3663.

“Indian Blood”: Boulevard Theatre. 8 p.m. Nov. 23-24; 2:30 p.m. Nov. 25; 7:30 p.m. Nov. 29. Boulevard Ensemble Studio Theatre, 2252 S. Kinnickinnic Ave. (414) 744-5757. (Through Dec. 2)

John McGivern’s “Holiday Monologue”: 7:30 p.m. Nov. 23. Sunset Playhouse, 800 Elm Grove Road, Elm Grove. (262) 782-4430. \$45 for performance, \$65 for performance and reception.

“Secrets Every Smart Traveler Should Know”: Apple Holler, Red Barn Theatre, 5006 S. Sylvania Ave. Sturtevant. (800) 238-3629. (Through Nov. 30)

“Someone Who’ll Watch Over Me”: 7:30 p.m. Nov. 23-25 and 29. Spiral Theater, 534 W. National Ave. (414) 248-6481. (Through Dec. 2)

“Trying”: Milwaukee Chamber Theatre. 8 p.m. Nov. 23; 4 and 8 p.m. Nov. 24; 2 p.m. Nov. 25; 7:30 p.m. Nov. 28-29. Broadway Theatre Center, Studio Theatre, 158 N. Broadway. (414) 291-7800. (Through Dec. 16)

“Twelve Days — A Milwaukee Christmas”: First Stage Children’s Theater. 7 p.m. Nov. 23; 1, 3:30 and 7 p.m. Nov. 24; 1 and 3:30 p.m. Nov. 25. Marcus Center, Todd Wehr Theater, 929 N. Water St. (414) 273-7206. (Through Dec. 24)

“White Christmas”: The Skylight. This musical based on the classic 1954 film features a score of Irving Berlin classics, including “Count Your Blessings,” “Sisters,” “Blue Skies,” “I Love a Piano” and, of course, “White Christmas.” 7:30 p.m. Nov. 23-24 and 29; 2 p.m. Nov. 25; 2 and 7:30 p.m. Nov. 28. Broadway Theatre Center, Cabot Theatre, 158 N. Broadway. (414) 291-7800. (Through Dec. 31)

Dance concerts

Wild Space Dance Company: “Balancing Forces.” 8 p.m. Nov. 29. Baker Theater Complex, Stiemke Theater, 108 E. Wells St. (414) 271-0712. (Through Dec. 1)

UWM Dance Department: “Dance Compositions II.” 7:30 p.m. Nov. 28. St. John’s On The Lake, Flagg Theatre, 1840 N. Prospect Ave. (414) 272-2022.

Classical music

Milwaukee Symphony Orchestra: “Beethoven Lives Upstairs” Kinderkonzert. 2 p.m. Nov. 25. Marcus Center, Uihlein Hall, 929 N. Water St. (414) 291-7605.

Milwaukee Symphony Orchestra: “Rhythmic, Dramatic.” Beethoven: Symphony No. 8

in F major; Bernstein: Serenade (After Plato’s Symposium); Sibelius: Symphony No. 2. 8 p.m. Nov. 23-24. Marcus Center, Uihlein Hall, 929 N. Water St. (414) 291-7605.

Music From Almost Yesterday Student Ensemble: 7:30 p.m. Nov. 29. UWM Peck School of the Arts, Recital Hall. 2400 E. Kenwood Blvd. (414) 229-4308.

Pitch your art

Want your art show to get mentioned in MKE? Send your nominations for our “Pitch Your Show” feature to info@mkonline.com.

Museums

Charles A. Wustum Museum: 2519 Northwestern Ave., Racine. (262) 636-9177.

Hangin’ Out the Washes: Forty Years of Watercolor Wisconsin: (Through Nov. 24)

Charles Allis Art Museum: 1801 N. Prospect Ave. (414) 278-8295. **The Permanent Collection: Works on Paper:** (Through Dec. 9)

Clark House Museum: 206 E. Wisconsin Ave., Pewaukee. (262) 691-0233.

Native American exhibit: (Through December)

The Eisner: American Museum of Advertising & Design, 208 N. Water St. (414) 847-3290.

“Opt in to Advertising’s New Age”: Examples of advertising inspired by new technology. (Through Dec. 31)

Haggerty Museum of Art: 530 N. 13th St. (414) 288-1669.

Wifredo Lam in North America: More than 60 drawings and paintings from North American collections that best represent the different phases of Cuba’s best-known and most influential Surrealist. (Through Jan. 21)

Milwaukee Art Museum: 700 N. Art Museum Drive. (414) 224-3220.

Martin Ramirez: (Through Jan. 13)

Milwaukee Public Museum: 800 W. Wells St. (414) 278-2700.

The Climate Change Show: (Through Jan. 1)

Museum of Wisconsin Art: 300 S. 6th Ave. West Bend. (262) 334-9638.

Friends Annual Exhibition: (Through Dec. 23)

Racine Art Museum: 441 Main St., Racine. (262) 638-8300.

Icons of Elegance: The Most Influential Shoe Designers of the 20th Century: Organized by the Bata Shoe Museum in Toronto, the exhibit reflects the spirit of a century of changing times and tastes. (Through Jan. 20)

Villa Terrace Decorative Arts Museum: 2220 N. Terrace Ave. (414) 271-3656.

Children’s Art in the Garden: (Through Dec. 9)

A Stitch in Time: 18th and 19th Century Children’s Samplers: (Through Jan. 12)

Waukesha County Historical Society and Museum: 101 W. Main St., Waukesha. (262) 521-2859.

A Quiltmaker’s Art: (Through Dec. 15)

Galleries

Alfons Gallery: St. Joseph Center, 1501 S. Layton Blvd. (414) 385-5273.

Nancy Olson & Gregory Juris: Contemplation and Meditation With Nature: (Through Dec. 9)

Almost Gallery: 342 W. Main St., Waukesha. (262) 542-1522.

Still Lives: Life’s Treasures: Featuring the works of Don Fundingsland and Kathy Giraud. Also showing The Big Read Project, Reflections of Fahrenheit 451. (Through Nov. 25)

Alverno College: Art & Cultures Gallery, 3901 S. 39th St.

IV: Senior Exhibition: (Through Dec. 15)

Annona Bistro: 2643 S. Kinnickinnic Ave. (414) 744-2253.

The Dreams and Nightmares of Pamela Villanueva: (Through Nov. 30)

Art & Soul Gallery: 5708 W. Vliet St. (414) 774-4185.



Trans-Siberian Orchestra brings its music and light show to the Bradley Center on Dec. 16. MILWAUKEE JOURNAL SENTINEL FILE PHOTO